

signature makai

residence 01

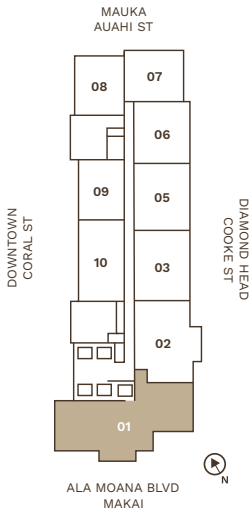
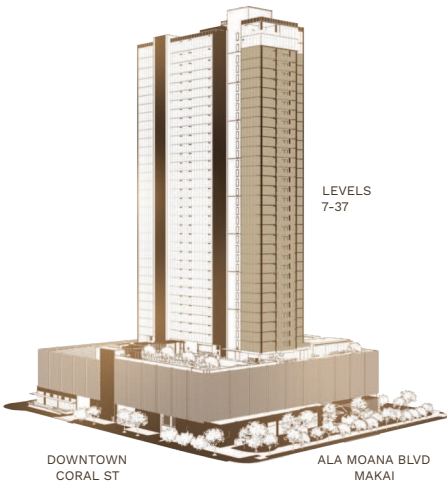
TYPE A

3 BEDROOMS / 3 BATHROOMS

INTERIOR 1,888 sq ft / 175 m²

LANAI 104 sq ft / 10 m²

TOTAL 1,992 sq ft / 185 m²



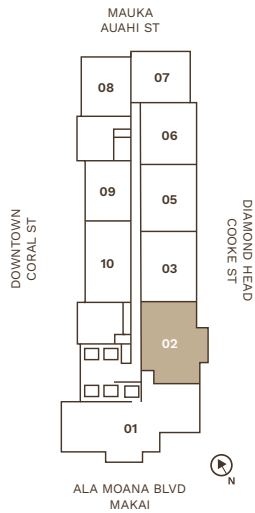
Kali'u Showroom 677 Ala Moana Boulevard, Suite 598 Honolulu, Hawai'i 96813 808.888.0598
Exclusive Project Broker: Heyer & Associates LLC, RB-17416 1288 Ala Moana Boulevard, Suite 108, Honolulu, Hawai'i 96814
www.kaliualamoana.com



DISCLAIMER KALI'U ("PROJECT") IS A PROPOSED CONDOMINIUM PROJECT THAT DOES NOT YET EXIST, AND THE DEVELOPMENT CONCEPTS THEREFOR CONTINUE TO EVOLVE AND ARE SUBJECT TO CHANGE WITHOUT NOTICE. ALL DESIGN, LAYOUT, FIGURES, FLOOR PLANS AND INFORMATION DEPICTED IN THIS FLOOR PLATE ARE ILLUSTRATIVE ONLY AND ARE PROVIDED TO ASSIST THE PURCHASER IN VISUALIZING THE UNITS AND THE PROJECT, MAY NOT BE ACCURATELY DEPICTED, AND ARE SUBJECT TO CHANGE AT ANY TIME.

WARNING: THE CALIFORNIA DEPARTMENT OF REAL ESTATE HAS NOT INSPECTED, EXAMINED, OR QUALIFIED THIS OFFERING. 🏠

rev. 02.2025



signature residence 02

DIAMOND HEAD

TYPE B

2 BEDROOMS / 2.5 BATHROOMS

INTERIOR 1,146 sq ft / 106 m²

LANAI 98 sq ft / 9 m²

TOTAL 1,244 sq ft / 115 m²

Kali'u Showroom 677 Ala Moana Boulevard, Suite 598 Honolulu, Hawai'i 96813 808.888.0598

Exclusive Project Broker: Heyer & Associates LLC, RB-17416 1288 Ala Moana Boulevard, Suite 108, Honolulu, Hawai'i 96814

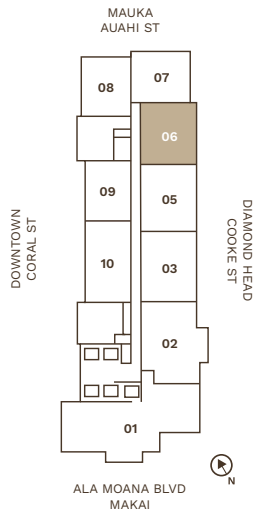
www.kaliualamoana.com



DISCLAIMER KALI'U ("PROJECT") IS A PROPOSED CONDOMINIUM PROJECT THAT DOES NOT YET EXIST, AND THE DEVELOPMENT CONCEPTS THEREFOR CONTINUE TO EVOLVE AND ARE SUBJECT TO CHANGE WITHOUT NOTICE. ALL DESIGN, LAYOUT, FIGURES, FLOOR PLANS AND INFORMATION DEPICTED IN THIS FLOOR PLATE ARE ILLUSTRATIVE ONLY AND ARE PROVIDED TO ASSIST THE PURCHASER IN VISUALIZING THE UNITS AND THE PROJECT, MAY NOT BE ACCURATELY DEPICTED, AND ARE SUBJECT TO CHANGE AT ANY TIME.

WARNING: THE CALIFORNIA DEPARTMENT OF REAL ESTATE HAS NOT INSPECTED, EXAMINED, OR QUALIFIED THIS OFFERING. 

rev. 02.2025



signature residence 06

DIAMOND HEAD

TYPE G

1 BEDROOM / 1.5 BATHROOMS

TOTAL 873 sq ft / 81 m²

Kali'u Showroom 677 Ala Moana Boulevard, Suite 598 Honolulu, Hawai'i 96813 808.888.0598

Exclusive Project Broker: Heyer & Associates LLC, RB-17416 1288 Ala Moana Boulevard, Suite 108, Honolulu, Hawai'i 96814

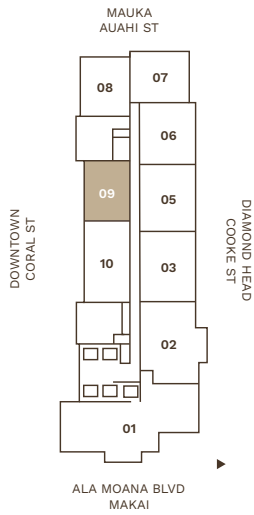
www.kaliualamoana.com



DISCLAIMER KALI'U ("PROJECT") IS A PROPOSED CONDOMINIUM PROJECT THAT DOES NOT YET EXIST, AND THE DEVELOPMENT CONCEPTS THEREFOR CONTINUE TO EVOLVE AND ARE SUBJECT TO CHANGE WITHOUT NOTICE. ALL DESIGN, LAYOUT, FIGURES, FLOOR PLANS AND INFORMATION DEPICTED IN THIS FLOOR PLATE ARE ILLUSTRATIVE ONLY AND ARE PROVIDED TO ASSIST THE PURCHASER IN VISUALIZING THE UNITS AND THE PROJECT, MAY NOT BE ACCURATELY DEPICTED, AND ARE SUBJECT TO CHANGE AT ANY TIME.

WARNING: THE CALIFORNIA DEPARTMENT OF REAL ESTATE HAS NOT INSPECTED, EXAMINED, OR QUALIFIED THIS OFFERING. 

rev. 02.2025



classic residence 09

DOWNTOWN

TYPE F

1 BEDROOM / 1 BATHROOM

TOTAL 682 sq ft / 63 m²

Kali'u Showroom 677 Ala Moana Boulevard, Suite 598 Honolulu, Hawai'i 96813 808.888.0598

Exclusive Project Broker: Heyer & Associates LLC, RB-17416 1288 Ala Moana Boulevard, Suite 108, Honolulu, Hawai'i 96814
www.kaliualamoana.com



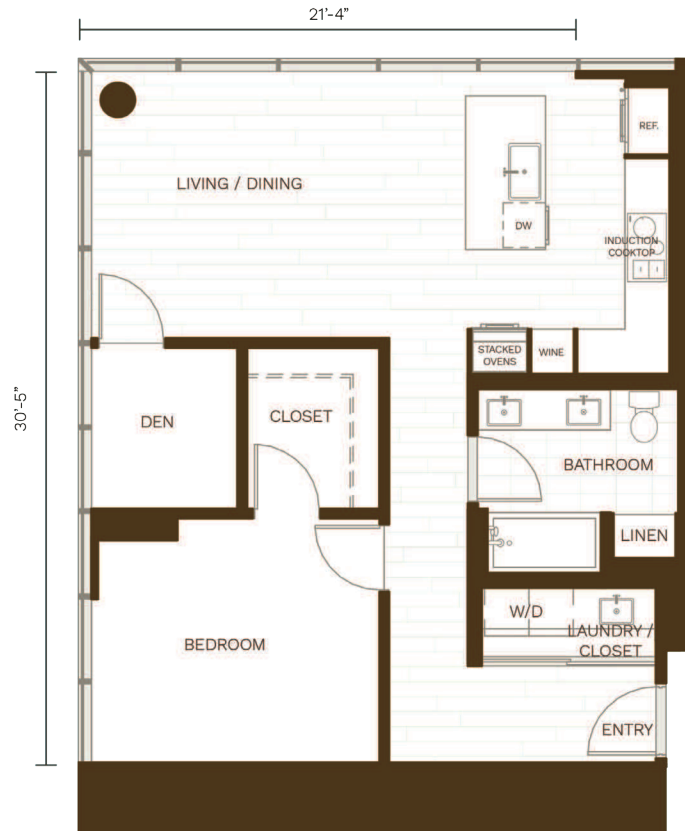
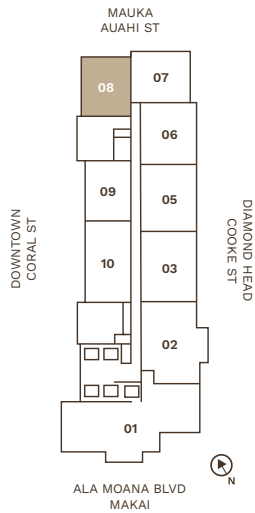
DISCLAIMER KALI'U ("PROJECT") IS A PROPOSED CONDOMINIUM PROJECT THAT DOES NOT YET EXIST, AND THE DEVELOPMENT CONCEPTS THEREFOR CONTINUE TO EVOLVE AND ARE SUBJECT TO CHANGE WITHOUT NOTICE. ALL DESIGN, LAYOUT, FIGURES, FLOOR PLANS AND INFORMATION DEPICTED IN THIS FLOOR PLATE ARE ILLUSTRATIVE ONLY AND ARE PROVIDED TO ASSIST THE PURCHASER IN VISUALIZING THE UNITS AND THE PROJECT, MAY NOT BE ACCURATELY DEPICTED, AND ARE SUBJECT TO CHANGE AT ANY TIME.

WARNING: THE CALIFORNIA DEPARTMENT OF REAL ESTATE HAS NOT INSPECTED, EXAMINED, OR QUALIFIED THIS OFFERING. 

rev. 02.2025

kali'u

ALA MOANA



classic residence 08

MAUKA

TYPE I

1 BEDROOM + DEN / 1 BATHROOM

TOTAL 766 sq ft / 71 m²

Kali'u Showroom 677 Ala Moana Boulevard, Suite 598 Honolulu, Hawai'i 96813 808.888.0598

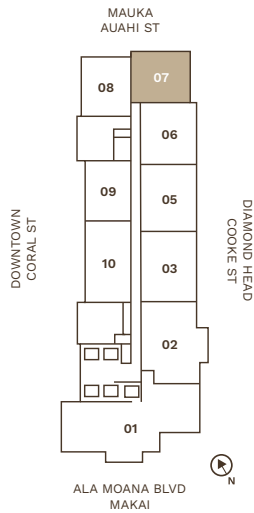
Exclusive Project Broker: Heyer & Associates LLC, RB-17416 1288 Ala Moana Boulevard, Suite 108, Honolulu, Hawai'i 96814
www.kaliualamoana.com



DISCLAIMER KALI'U ("PROJECT") IS A PROPOSED CONDOMINIUM PROJECT THAT DOES NOT YET EXIST, AND THE DEVELOPMENT CONCEPTS THEREFOR CONTINUE TO EVOLVE AND ARE SUBJECT TO CHANGE WITHOUT NOTICE. ALL DESIGN, LAYOUT, FIGURES, FLOOR PLANS AND INFORMATION DEPICTED IN THIS FLOOR PLATE ARE ILLUSTRATIVE ONLY AND ARE PROVIDED TO ASSIST THE PURCHASER IN VISUALIZING THE UNITS AND THE PROJECT, MAY NOT BE ACCURATELY DEPICTED, AND ARE SUBJECT TO CHANGE AT ANY TIME.

WARNING: THE CALIFORNIA DEPARTMENT OF REAL ESTATE HAS NOT INSPECTED, EXAMINED, OR QUALIFIED THIS OFFERING. 

rev. 02.2025



classic residence 07

MAUKA

TYPE H

1 BEDROOM + DEN / 1 BATHROOM

TOTAL 778 sq ft / 72 m²

Kali'u Showroom 677 Ala Moana Boulevard, Suite 598 Honolulu, Hawai'i 96813 808.888.0598

Exclusive Project Broker: Heyer & Associates LLC, RB-17416 1288 Ala Moana Boulevard, Suite 108, Honolulu, Hawai'i 96814

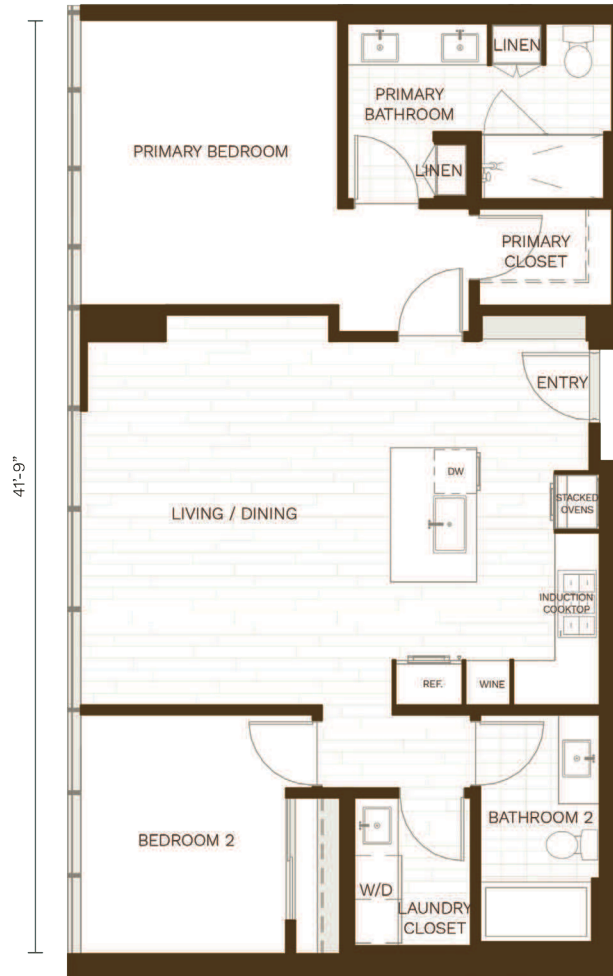
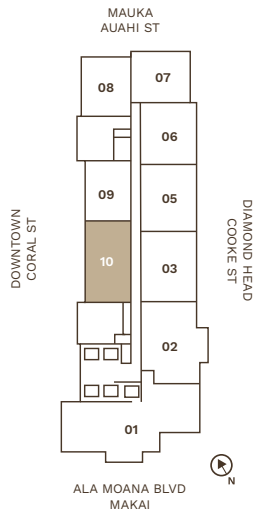
www.kaliualamoana.com



DISCLAIMER KALI'U ("PROJECT") IS A PROPOSED CONDOMINIUM PROJECT THAT DOES NOT YET EXIST, AND THE DEVELOPMENT CONCEPTS THEREFOR CONTINUE TO EVOLVE AND ARE SUBJECT TO CHANGE WITHOUT NOTICE. ALL DESIGN, LAYOUT, FIGURES, FLOOR PLANS AND INFORMATION DEPICTED IN THIS FLOOR PLATE ARE ILLUSTRATIVE ONLY AND ARE PROVIDED TO ASSIST THE PURCHASER IN VISUALIZING THE UNITS AND THE PROJECT, MAY NOT BE ACCURATELY DEPICTED, AND ARE SUBJECT TO CHANGE AT ANY TIME.

WARNING: THE CALIFORNIA DEPARTMENT OF REAL ESTATE HAS NOT INSPECTED, EXAMINED, OR QUALIFIED THIS OFFERING. 

rev. 02.2025



classic residence 10

DOWNTOWN

TYPE D

2 BEDROOMS / 2 BATHROOMS

TOTAL 956 sq ft / 88 m²

Kali'u Showroom 677 Ala Moana Boulevard, Suite 598 Honolulu, Hawai'i 96813 808.888.0598

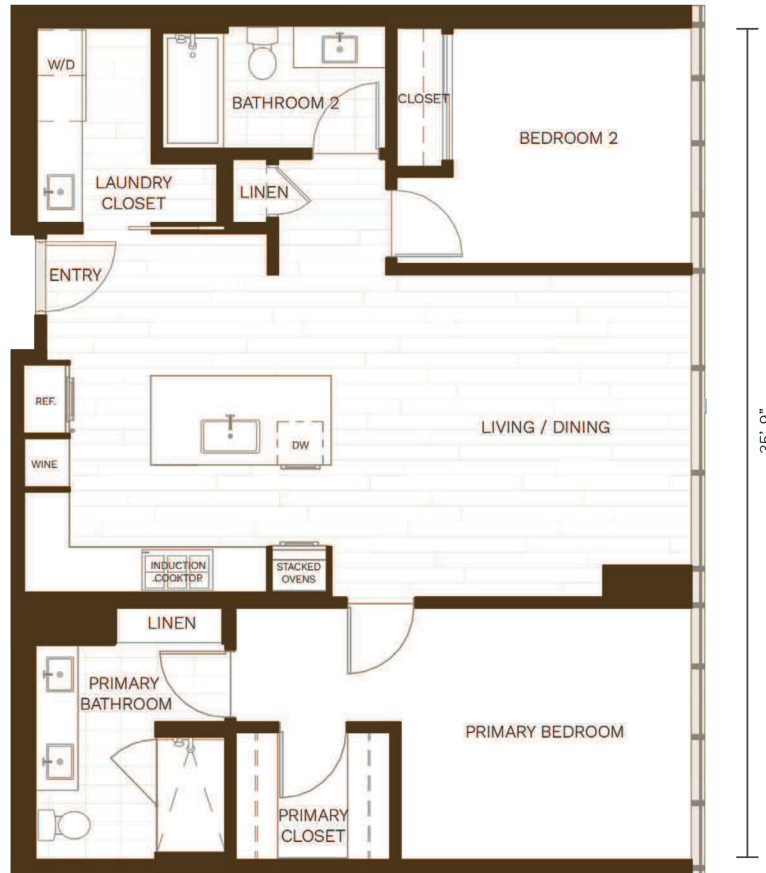
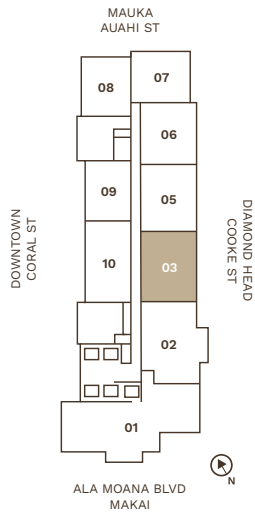
Exclusive Project Broker: Heyer & Associates LLC, RB-17416 1288 Ala Moana Boulevard, Suite 108, Honolulu, Hawai'i 96814
www.kaliualamoana.com



DISCLAIMER KALI'U ("PROJECT") IS A PROPOSED CONDOMINIUM PROJECT THAT DOES NOT YET EXIST, AND THE DEVELOPMENT CONCEPTS THEREFOR CONTINUE TO EVOLVE AND ARE SUBJECT TO CHANGE WITHOUT NOTICE. ALL DESIGN, LAYOUT, FIGURES, FLOOR PLANS AND INFORMATION DEPICTED IN THIS FLOOR PLATE ARE ILLUSTRATIVE ONLY AND ARE PROVIDED TO ASSIST THE PURCHASER IN VISUALIZING THE UNITS AND THE PROJECT, MAY NOT BE ACCURATELY DEPICTED, AND ARE SUBJECT TO CHANGE AT ANY TIME.

WARNING: THE CALIFORNIA DEPARTMENT OF REAL ESTATE HAS NOT INSPECTED, EXAMINED, OR QUALIFIED THIS OFFERING. 

rev. 02.2025



classic residence 03

DIAMOND HEAD

TYPE C

2 BEDROOMS / 2 BATHROOMS

TOTAL 995 sq ft / 92 m²

Kali'u Showroom 677 Ala Moana Boulevard, Suite 598 Honolulu, Hawai'i 96813 808.888.0598

Exclusive Project Broker: Heyer & Associates LLC, RB-17416 1288 Ala Moana Boulevard, Suite 108, Honolulu, Hawai'i 96814

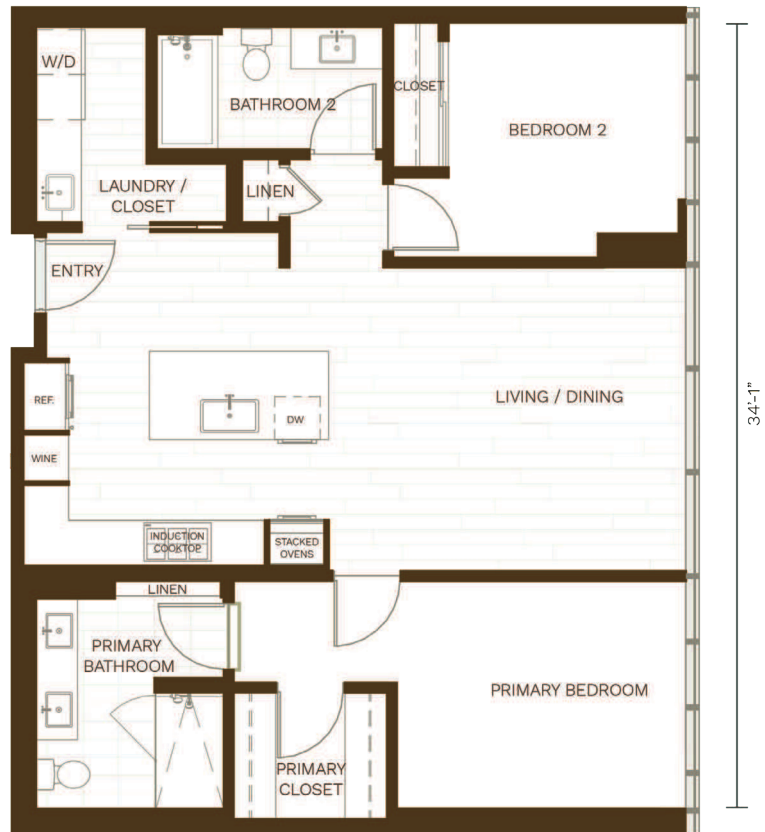
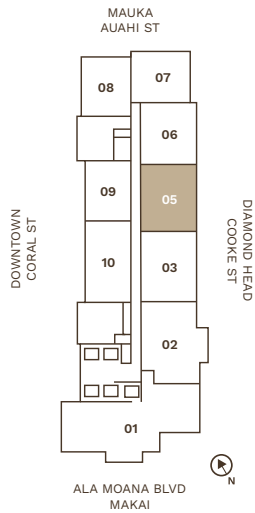
www.kaliualamoana.com



DISCLAIMER KALI'U ("PROJECT") IS A PROPOSED CONDOMINIUM PROJECT THAT DOES NOT YET EXIST, AND THE DEVELOPMENT CONCEPTS THEREFOR CONTINUE TO EVOLVE AND ARE SUBJECT TO CHANGE WITHOUT NOTICE. ALL DESIGN, LAYOUT, FIGURES, FLOOR PLANS AND INFORMATION DEPICTED IN THIS FLOOR PLATE ARE ILLUSTRATIVE ONLY AND ARE PROVIDED TO ASSIST THE PURCHASER IN VISUALIZING THE UNITS AND THE PROJECT, MAY NOT BE ACCURATELY DEPICTED, AND ARE SUBJECT TO CHANGE AT ANY TIME.

WARNING: THE CALIFORNIA DEPARTMENT OF REAL ESTATE HAS NOT INSPECTED, EXAMINED, OR QUALIFIED THIS OFFERING. 

rev. 02.2025



classic residence 05

DIAMOND HEAD

TYPE E

2 BEDROOMS / 2 BATHROOMS

TOTAL 956 sq ft / 88 m²

Kali'u Showroom 677 Ala Moana Boulevard, Suite 598 Honolulu, Hawai'i 96813 808.888.0598

Exclusive Project Broker: Heyer & Associates LLC, RB-17416 1288 Ala Moana Boulevard, Suite 108, Honolulu, Hawai'i 96814

www.kaliualamoana.com



DISCLAIMER KALI'U ("PROJECT") IS A PROPOSED CONDOMINIUM PROJECT THAT DOES NOT YET EXIST, AND THE DEVELOPMENT CONCEPTS THEREFOR CONTINUE TO EVOLVE AND ARE SUBJECT TO CHANGE WITHOUT NOTICE. ALL DESIGN, LAYOUT, FIGURES, FLOOR PLANS AND INFORMATION DEPICTED IN THIS FLOOR PLATE ARE ILLUSTRATIVE ONLY AND ARE PROVIDED TO ASSIST THE PURCHASER IN VISUALIZING THE UNITS AND THE PROJECT, MAY NOT BE ACCURATELY DEPICTED, AND ARE SUBJECT TO CHANGE AT ANY TIME.

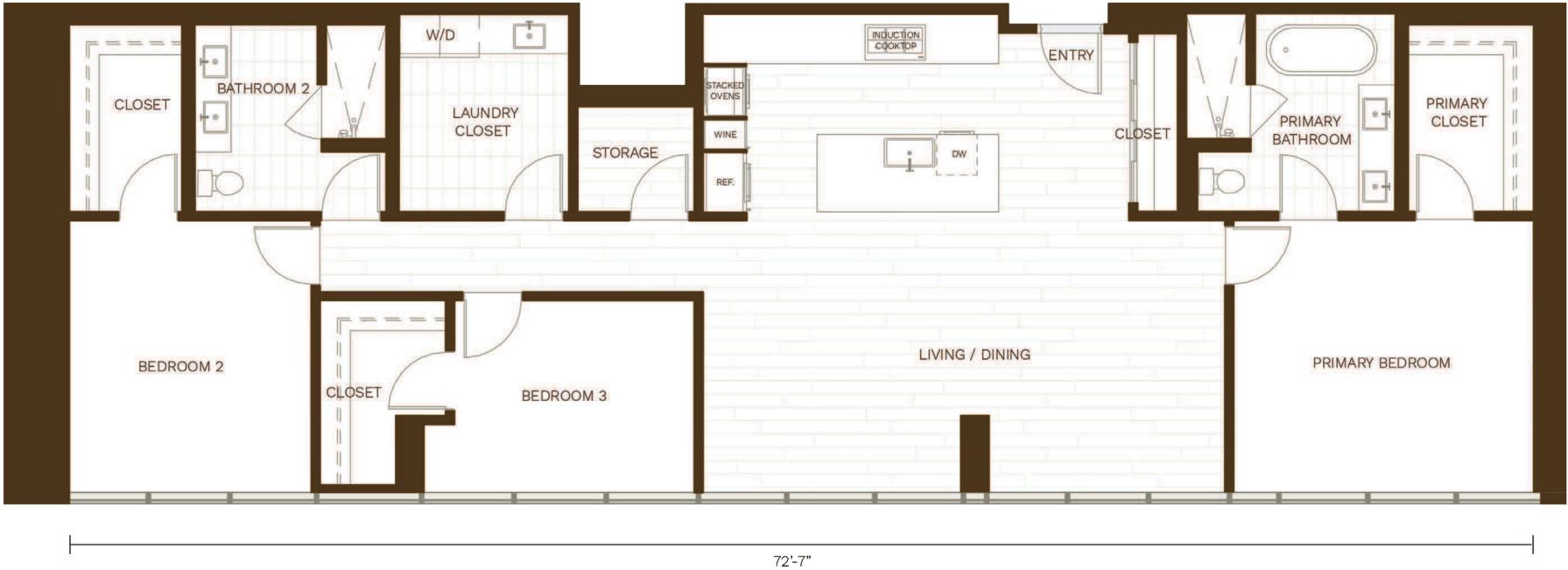
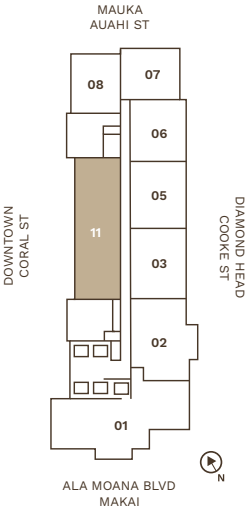
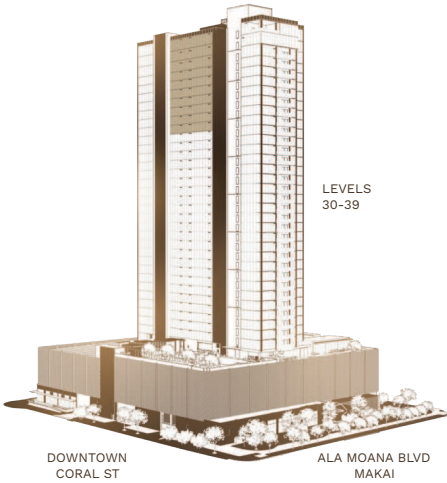
WARNING: THE CALIFORNIA DEPARTMENT OF REAL ESTATE HAS NOT INSPECTED, EXAMINED, OR QUALIFIED THIS OFFERING. 

rev. 02.2025

classic residence 11

DOWNTOWN
TYPE L
3 BEDROOMS / 2 BATHROOMS

TOTAL 1,662 sq ft / 154 m²



Kali'u Showroom 677 Ala Moana Boulevard, Suite 598 Honolulu, Hawai'i 96813 808.888.0598
Exclusive Project Broker: Heyer & Associates LLC, RB-17416 1288 Ala Moana Boulevard, Suite 108, Honolulu, Hawai'i 96814
www.kaliualamoana.com



DISCLAIMER KALI'U ("PROJECT") IS A PROPOSED CONDOMINIUM PROJECT THAT DOES NOT YET EXIST, AND THE DEVELOPMENT CONCEPTS THEREFOR CONTINUE TO EVOLVE AND ARE SUBJECT TO CHANGE WITHOUT NOTICE. ALL DESIGN, LAYOUT, FIGURES, FLOOR PLANS AND INFORMATION DEPICTED IN THIS FLOOR PLATE ARE ILLUSTRATIVE ONLY AND ARE PROVIDED TO ASSIST THE PURCHASER IN VISUALIZING THE UNITS AND THE PROJECT, MAY NOT BE ACCURATELY DEPICTED, AND ARE SUBJECT TO CHANGE AT ANY TIME.

WARNING: THE CALIFORNIA DEPARTMENT OF REAL ESTATE HAS NOT INSPECTED, EXAMINED, OR QUALIFIED THIS OFFERING. 🏠

rev. 02.2025