



WEDNESDAY EXPLORERS

14 JULY 2021

LOMA LINDA

THE MISSION & THE STORY



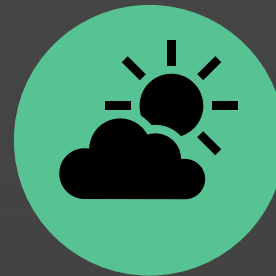
Loma Linda is a 100 hectare farm South of Volcan on the road to David. It is the planned site for a housing development.



The walk took us around the perimeter of the farm. There are other trails on the property, so it is worth going back.

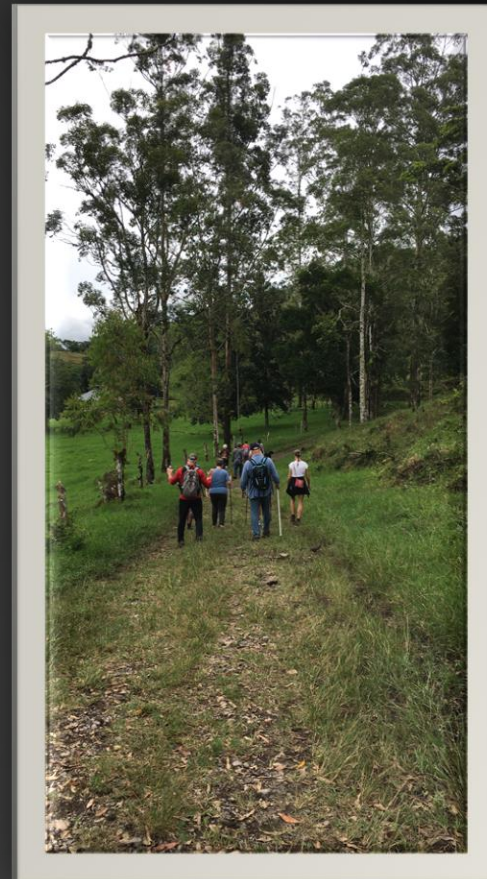
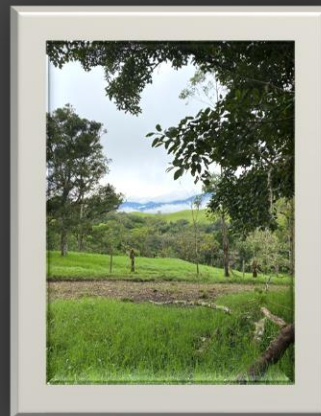
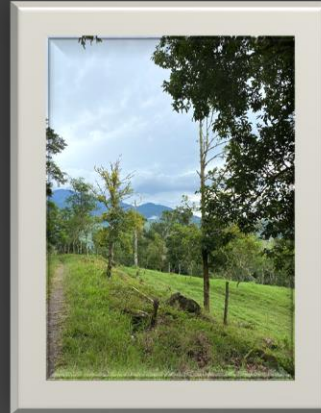


It is an easy walk with beautiful views of Volcan, the Pacific, and a small lake on the property.



There were 16 hikers. It was a lovely, somewhat cloudy day. Luckily the clouds did not impede the views.

THE TRAIL



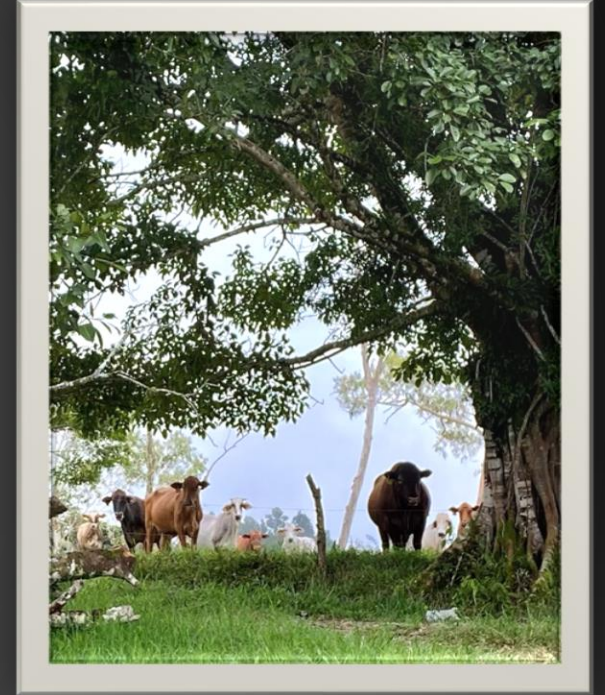
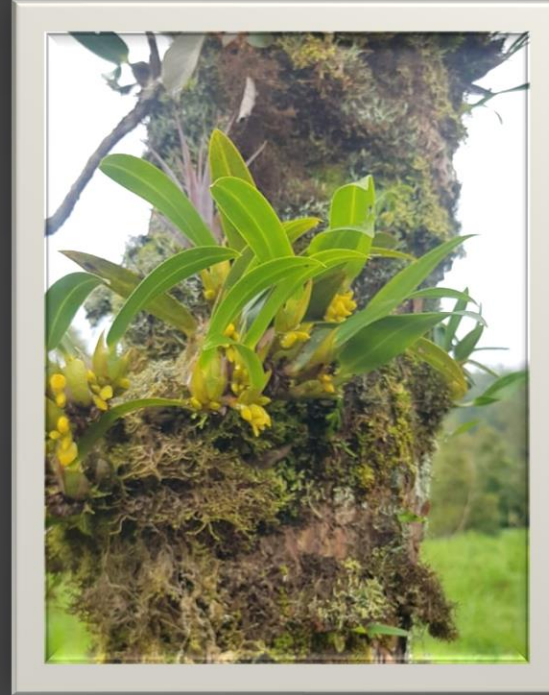
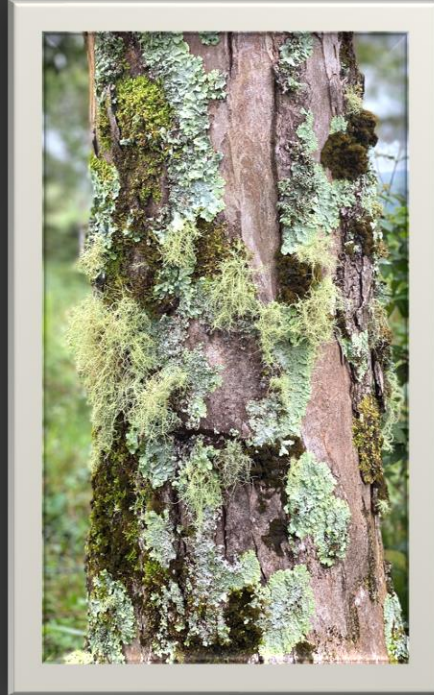
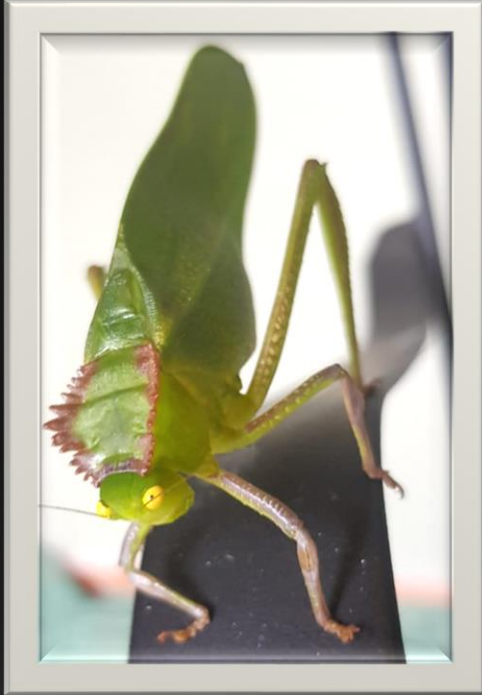
THE VIEWS



THE GANG



FLORA & FAUNA



VITAL STATISTICS

- Number of Explorers: 16
- All Explorers: Cher, Diana, Pete, Dave, Matt, Natalie, Liesel, Jennifer, Rob, Richard, Kevin, Laurie Tony, Brennan, Victoria, Darla, Pat, Paul
- New Explorers : Brennan
- Furry Friends: Zeke
- Total Steps: 8000+
- Total distance: 5 km
- Maximum Height: 1445 m
- Elevation Gain: 233 m
- Time taken: 2.00+ hrs
- Time Walking: 1.40 hr
- Overall Difficulty Rating: 1/5 (Easy)
- Consensus: Great walk. Beautiful Views
- After Action Replenishment & Social: Black Mountain Coffee