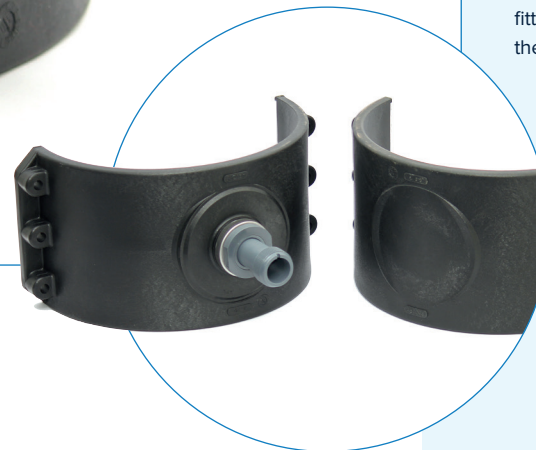


Fittings

💧 Tapping saddles for the DF170 series



Description

With the PP tapping saddle, it is possible to fit a DF170 flow sensor in a plastic pipe system.

Thanks to its construction, it is easy to assemble and the flow sensor is always correctly positioned in the pipe. Also, it is easy to remove the flow sensor if desired.

Installation instructions

In order for the flow sensors to work correctly, it is important that the pipe sections before and after the flow sensor are straight and uninterrupted (10x the pipe diameter before the sensor and 5x the pipe diameter after the sensor).

The pressure of the medium must not exceed 10 bar. Not observing the installation instructions may negatively influence the measurement results.

The tapping saddle consists of a PP tapping saddle with a PVC fitting. The O-ring is made of NBR. Tapping saddle is available in the sizes d50 to d315.