

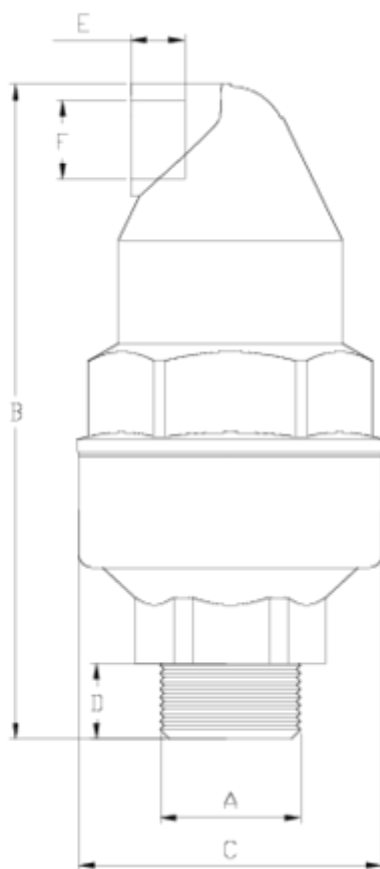


## Net air release valve

### Double effect (C1) ITEM 306

Ref.	Description	Net W.	Vol. (m <sup>3</sup> )	Gross W.	Batch
1017001	VENTOSA DOBLE EFECTO PPFV 1/2"	0.284	0.02244	6.17	20
1017002	VENTOSA NET DOBLE EFECTO E/CINETICO 3/4"(PPFV)	0.289	0.02244	6.27	20
1017003	VENTOSA NET E/CINETICO 1"(PPFV)	0.283	0.02244	6.15	20





## ITEM 306 | Double effect (C1)

Código	f A	Peso (g)	B	C	D	E	F	Material	PN	TIPO ROSCA
17001	1/2"	256.5	158	75	14	15	1/2"	PPFV	PN16	BSP
17002	3/4"	260.1	160	75	16	15	1/2"	PPFV	PN16	BSP
17003	1"	265.5	163	75	19	15	1/2"	PPFV	PN16	BSP
17501	1/2"	281.2	158	75	14	15	1/2"	PA	PN25	BSP
17502	3/4"	285.95	160	75	16	15	1/2"	PA	PN25	BSP
17503	1"	291.65	163	75	19	15	1/2"	PA	PN25	BSP



## PRODUCT DOCUMENTS



## PRODUCT CERTIFICATES

## COMPANY CERTIFICATES

